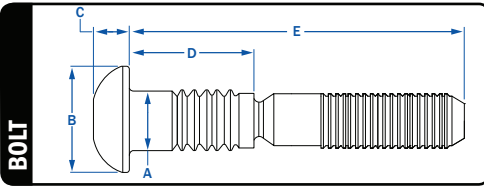


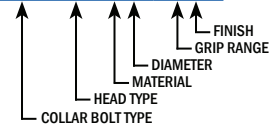
RIVETKING® COLLAR BOLT FIXED GRIP



COLLAR BOLT
Industrial Rivet's part numbers are made up of six elements which, when correctly designated, completely describe the desired rivet.

SAMPLE PART NUMBER

CBC6LT - R6 - 2G



GRIPS

NOM. BODY DIA.	PART NUMBER					GRIP RANGE		NOTCH LENGTH	OVERALL LENGTH	MAX HOLE SIZE
	CATEGORY	HEAD	MATERIAL	DIA-GRIP	PLATING	MIN.	MAX.			
3/16"	CBC6L	T	R	6-2	G	0.063	0.188	0.394	1.404	0.203
	CBC6L	T	R	6-3	G	0.125	0.250	0.457	1.466	
	CBC6L	T	R	6-4	G	0.188	0.313	0.519	1.529	
	CBC6L	T	R	6-5	G	0.250	0.375	0.582	1.591	
	CBC6L	T	R	6-6	G	0.313	0.438	0.644	1.654	
	CBC6L	T	R	6-7	G	0.375	0.500	0.707	1.716	
	CBC6L	T	R	6-8	G	0.438	0.563	0.769	1.779	
	CBC6L	T	R	6-9	G	0.500	0.625	0.832	1.841	
	CBC6L	T	R	6-10	G	0.563	0.688	0.894	1.904	
	CBC6L	T	R	6-11	G	0.625	0.750	0.957	1.966	
	CBC6L	T	R	6-12	G	0.688	0.813	1.019	2.029	
	CBC6L	T	R	6-13	G	0.750	0.875	1.082	2.091	
	CBC6L	T	R	6-14	G	0.813	0.938	1.144	2.154	
	CBC6L	T	R	6-15	G	0.875	1.000	1.207	2.216	
	CBC6L	T	R	6-16	G	0.938	1.063	1.269	2.279	
	CBC6L	T	R	6-17	G	1.000	1.125	1.332	2.341	
	CBC6L	T	R	6-18	G	1.063	1.188	1.394	2.404	
	CBC6L	T	R	6-19	G	1.125	1.250	1.457	2.466	
	CBC6L	T	R	6-20	G	1.188	1.313	1.519	2.529	
1/4"	CBC6L	T	R	8-2	G	0.063	0.188	0.485	1.520	0.266
	CBC6L	T	R	8-3	G	0.125	0.250	0.548	1.583	
	CBC6L	T	R	8-4	G	0.188	0.313	0.610	1.645	
	CBC6L	T	R	8-5	G	0.250	0.375	0.673	1.708	
	CBC6L	T	R	8-6	G	0.313	0.438	0.735	1.770	
	CBC6L	T	R	8-7	G	0.375	0.500	0.798	1.833	
	CBC6L	T	R	8-8	G	0.438	0.563	0.860	1.895	
	CBC6L	T	R	8-9	G	0.500	0.625	0.923	1.958	
	CBC6L	T	R	8-10	G	0.563	0.688	0.985	2.020	
	CBC6L	T	R	8-11	G	0.625	0.750	1.048	2.083	
	CBC6L	T	R	8-12	G	0.688	0.813	1.110	2.145	
	CBC6L	T	R	8-13	G	0.750	0.875	1.173	2.208	
	CBC6L	T	R	8-14	G	0.813	0.938	1.235	2.270	
	CBC6L	T	R	8-15	G	0.875	1.000	1.298	2.333	
	CBC6L	T	R	8-16	G	0.938	1.063	1.360	2.395	
	CBC6L	T	R	8-17	G	1.000	1.125	1.423	2.458	
	CBC6L	T	R	8-18	G	1.063	1.188	1.485	2.520	
	CBC6L	T	R	8-19	G	1.125	1.250	1.548	2.583	
	CBC6L	T	R	8-20	G	1.188	1.313	1.610	2.645	
5/16"	CBC6L	T	R	10-4	G	0.125	0.375	0.749	1.910	0.328
	CBC6L	T	R	10-6	G	0.250	0.500	0.874	2.035	
	CBC6L	T	R	10-8	G	0.375	0.625	0.999	2.160	
	CBC6L	T	R	10-10	G	0.500	0.750	1.124	2.285	
	CBC6L	T	R	10-12	G	0.625	0.875	1.249	2.410	
	CBC6L	T	R	10-14	G	0.750	1.000	1.374	2.535	
	CBC6L	T	R	10-16	G	0.875	1.125	1.499	2.660	
	CBC6L	T	R	10-18	G	1.000	1.250	1.624	2.785	
	CBC6L	T	R	10-20	G	1.125	1.375	1.749	2.910	
	3/8"	CBC6L	T	R	12-4	G	0.125	0.375	0.934	
CBC6L		T	R	12-6	G	0.250	0.500	0.934	2.246	
CBC6L		T	R	12-8	G	0.375	0.625	1.059	2.371	
CBC6L		T	R	12-10	G	0.500	0.750	1.184	2.496	
CBC6L		T	R	12-12	G	0.625	0.875	1.309	2.621	
CBC6L		T	R	12-14	G	0.750	1.000	1.434	2.746	
CBC6L		T	R	12-16	G	0.875	1.125	1.559	2.871	
CBC6L		T	R	12-18	G	1.000	1.250	1.684	2.996	
CBC6L		T	R	12-20	G	1.125	1.375	1.809	3.121	

RK-722 TOOL



RK-745 TOOL



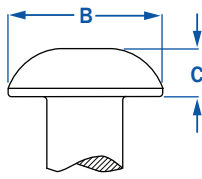
RK-756 TOOL



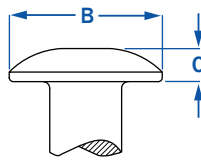
RIVETKING® COLLAR BOLT FIXED GRIP

HEADS

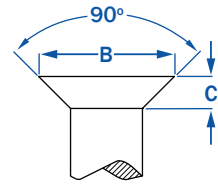
BRAZIER HEAD



TRUSS HEAD



FLUSH HEAD



NOM. BODY DIA.	BRAZIER HEAD (B)		TRUSS HEAD (T)		FLUSH HEAD (90)	
	HEAD DIAMETER (B)	HEAD HEIGHT (D)	HEAD DIAMETER (B)	HEAD HEIGHT (D)	HEAD DIAMETER (B)	HEAD HEIGHT (D)
3/16"	.394 - .356	.125 - .113	.469 - .406	.088 - .078	.354 - .328	.085 - .075
1/4"	.525 - .475	.152 - .136	.594 - .531	.115 - .103	.473 - .437	.113 - .101
5/16"	.656 - .594	.201 - .181	.797 - .703	.141 - .127	.589 - .547	.141 - .127
3/8"	.787 - .713	.248 - .223	.922 - .828	.168 - .152	.709 - .656	.168 - .152

Capacity to 1 1/8" Diameter on request

MATERIALS

NOM. BODY DIA.		STEEL (R)	ALUMINUM 2024 (C)	ALUMINUM 6061 (F)	STAINLESS Steel 18-8 (U)
		3/16"	SHEAR	1725	1050
	TENSILE	1650	1000	530	1455
1/4"	SHEAR	3050	1875	1375	3550
	TENSILE	3000	1800	975	3750
5/16"	SHEAR	4725	2925	2125	5525
	TENSILE	4600	2850	1550	4250
3/8"	SHEAR	6825	4200	3050	7950
	TENSILE	6500	4200	2400	6100

Capacity to 1 1/8" Diameter on request

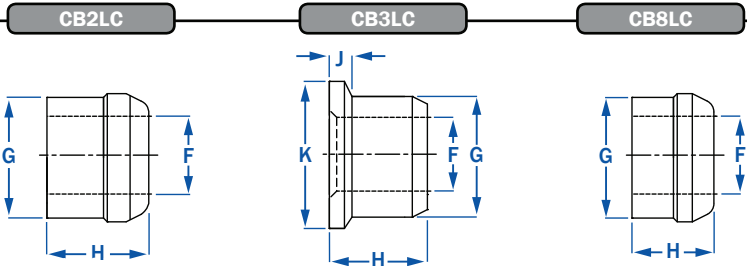
RK-745/KIT • MAX 3/8"



RK-756/KIT • MAX 3/8"



COLLAR DIMENSIONS



COLLAR	DIAMETER	HOLE DIAMETER (F)	BODY DIAMETER (G)	OVERALL LENGTH (H)	HEAD HEIGHT (J)	HEAD DIAMETER (K)
STANDARD	3/16"	.187 - .196	.311 - .304	.220 - .260		
	1/4"	.256 - .265	.409 - .402	.320 - .290		
	5/16"	.304 - .312	.494 - .485	.380 - .350		
	3/8"	.375 - .385	.600 - .590	.460 - .430		
FLANGE	3/16"	.187 - .196	.311 - .304	.280 - .250	.062 - .031	.391 - .359
	1/4"	.256 - .267	.409 - .402	.379 - .349	.078 - .047	.516 - .484
	5/16"	.304 - .312	.507 - .498	.426 - .394	.094 - .062	.641 - .609
	3/8"	.378 - .390	.610 - .599	.532 - .502	.125 - .062	.781 - .719
LOW PROFILE	3/16"	.187 - .196	.311 - .304	.162 - .132	0.094	
	1/4"	.256 - .265	.409 - .402	.202 - .172	0.125	
	5/16"	.304 - .312	.494 - .485	.255 - .225	0.125	
	3/8"	.375 - .385	.600 - .590	.295 - .310	0.156	



Call Rivet USA (a division of Cardinal Components) to Order or for Quote

800-236-3200 | info@cardinalcomponents.com | www.rivetusa.com