

# RIVETKING® ABA SERIES • ALL ALUMINUM RIVETS • OPEN END

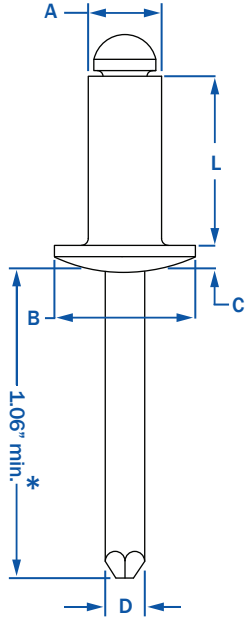
RIVET: 5052 ALUMINUM • MANDREL: ALUMINUM

STANDARD BLIND RIVETS

RIVETKING® ALUMINUM/ALUMINUM BLIND RIVETS BRIGHT POLISHED TO IMPROVE OXIDATION RESISTANCE AND OVERALL AESTHETICS OF THE RIVETED PRODUCT. Our rivets are tested to ensure consistent error free application from rivet to rivet. A special treatment applied to the rivet insures the mandrel will be encased by the rivet during application. The blunt diamond point prevents injury while improving application speed. All aluminum rivets are ranked #5 in shear and tensile strength for open end standards. PER IFI-114 GRADE 11.

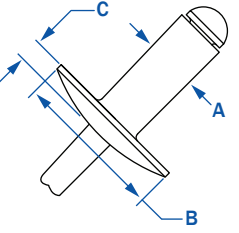


STANDARD FLANGE-DOME HEAD



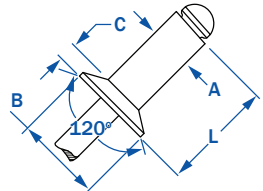
DIA.	PART NUMBER	GRIP RANGE	RIVET LENGTH	HEAD DIA.	HEAD HEIGHT	MANDREL DIA.	HOLE SIZE (DRILL #)	STRENGTH		Wt. lbs/M
								SHEAR	TENSILE	
3/32"	ABA - 32	.020 - .125	.250	.188	.032	.057	.097 - .100 (#41)	70	80	.70
	ABA - 34	.126 - .250	.375							.70
	ABA - 41	.020 - .062	.212							1.00
1/8"	ABA - 42	.063 - .125	.275	.250	.040	.076	.129 - .133 (#30)	120	150	1.10
	ABA - 43	.126 - .187	.337							1.20
	ABA - 44	.188 - .250	.400							1.30
	ABA - 45	.251 - .312	.462							1.30
	ABA - 46	.313 - .375	.525							1.40
	ABA - 48	.376 - .500	.650							1.50
	ABA - 410	.501 - .625	.775							1.67
	ABA - 412	.626 - .750	.900							
	ABA - 52	.020 - .125	.300							
	ABA - 53	.126 - .187	.362							
5/32"	ABA - 54	.188 - .250	.425	.312	.050	.095	.160 - .164 (#20)	190	230	1.88
	ABA - 56	.251 - .375	.550							2.00
	ABA - 58	.376 - .500	.675							2.50
	ABA - 62	.020 - .125	.325							2.50
3/16"	ABA - 63	.126 - .187	.387	.375	.060	.114	.192 - .196 (#11)	260	320	2.80
	ABA - 64	.188 - .250	.450							2.90
	ABA - 66	.251 - .375	.575							3.00
	ABA - 68	.376 - .500	.700							3.40
	ABA - 610	.501 - .625	.825							3.75
	ABA - 612	.626 - .750	.950							4.25
	ABA - 614	.751 - .875	1.075							4.50
	ABA - 616	.876 - 1.00	1.200							5.00
	ABA - 84	.020 - .250	.500							
	ABA - 86	.251 - .375	.625							
1/4"	ABA - 88	.376 - .500	.750	.500	.080	.151	.257 - .261 (F)	460	560	6.50
	ABA - 810	.501 - .625	.875							7.00
	ABA - 812	.626 - .750	1.000							7.50
	ABA - 814	.751 - .875	1.125							8.50
	ABA - 816	.876 - 1.00	1.250							8.50
										10.00

LARGE FLANGE



1/8"	ABA - 42LF	.063 - .125	.275	.375	.065	.076	.129 - .133 (#30)	120	150	1.20
	ABA - 43LF	.126 - .187	.337							1.30
	ABA - 44LF	.188 - .250	.400							1.40
	ABA - 46LF	.313 - .375	.525							1.75
	ABA - 48LF	.376 - .500	.650							1.89
5/32"	ABA - 52LF	.020 - .125	.300	.468	.075	.095	.160 - .164 (#20)	190	230	2.75
	ABA - 54LF	.188 - .250	.425							2.94
	ABA - 56LF	.251 - .375	.550							
3/16"	ABA - 62LF	.020 - .125	.325	.625	.092	.114	.192 - .196 (#11)	260	320	4.67
	ABA - 64LF	.188 - .250	.450							5.00
	ABA - 66LF	.251 - .375	.575							5.00
	ABA - 68LF	.376 - .500	.700							5.50
	ABA - 610LF	.501 - .625	.825							6.00
	ABA - 612LF	.626 - .750	.950							6.00
	ABA - 614LF	.751 - .875	1.075							6.00
	ABA - 616LF	.876 - 1.00	1.200							6.50
1/4"	ABA - 88LF	.376 - .500	.750	.750	1.07	.151	.257 - .261	460	560	

COUNTERSUNK



1/8"	ACA - 42	.063 - .125	.275	.220	.031	.076	.129 - .133 (#30)	120	150	1.10
	ACA - 43	.126 - .187	.337							1.20
	ACA - 44	.188 - .250	.400							1.30
5/32"	ACA - 54	.188 - .250	.425	.281	.040	.095	.160 - .164	190	230	1.88
3/16"	ACA - 64	.188 - .250	.450	.350	.050	.114	.192 - .196 (#11)	260	320	2.80
	ACA - 66	.251 - .375	.575							2.80

\* 1/4" Diameter rivets have a 1.250 mandrel length minimum.



Call Rivet USA (a division of Cardinal Components) to Order or for Quote

800-236-3200 | info@cardinalcomponents.com | www.rivetusa.com